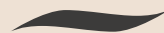


STANDARDS



NA PRAMENECH

bytynapramenech.cz

STANDARDS

WINDOWS AND DOORS

Windows and balcony doors: PKS anthracite (exterior side) and white (interior side) plastic windows with insulated triple-glazed panes, CONEX safety foil on the 1st floor.

Apartment entrance doors: Full security (safety class min. 2), security door handle – ball shape.

Interior doors: DOORNITE rebated doors, white lacquered or CPL (laminated) premium—anthracite, white, Finnish pine—2.1 m height, full, 4/5 glazed in the living room, DTD board filling.

Doorframes: DOORNITE rebated doorframes, white lacquered or CPL (laminated) premium in three wood decors.

Handles and fittings: M&T LUSY partition rosette handle, locks on the toilet and bathroom doors.



white lacquered



anthracite



white



Finnish pine



Developer

bpd development

Exclusive representation

svoboda&williams | CHRISTIE'S
INTERNATIONAL REAL ESTATE

+420 257 328 281, +420 724 551 238 | info@bytynapramenech.cz

STANDARDS

FLOORS

Floor surfaces: BARLINEK three-layer floors, single or triple lamella, choice of two decors, including skirting, transition, and final skirting boards.

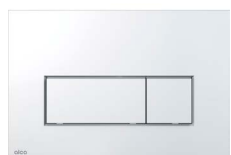


STANDARDS

BATHROOMS – SANITARY WARE

Sanitary ware:

- HANSGRÖHE MY SPORT lever tap, chrome.
- LAUFEN PRO wall hung toilet.
- LAUFEN PRO ceramic sinks.
- KALDEWEI SANIFORM PLUS enamel bathtub.
- ROLTECHNIK LEGA LINE showers.
- ROTH shower tray, cast marble.
- TECE toilet module.
- TECEbase toilet flush plate, bright chrome.



Developer

bpd development

Exclusive representation

svoboda&williams | CHRISTIE'S
INTERNATIONAL REAL ESTATE

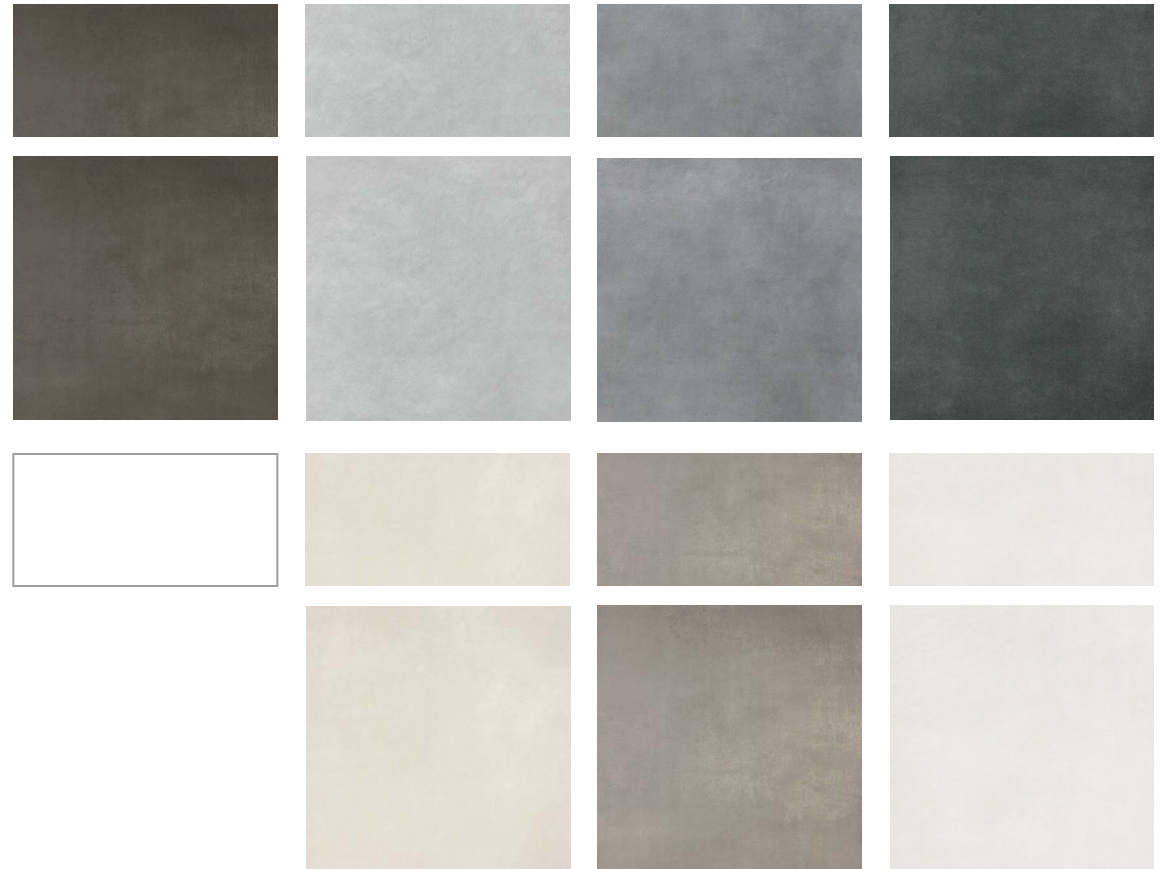
+420 257 328 281, +420 724 551 238 | info@bytynapramenech.cz

STANDARDS

BATHROOMS – FLOOR AND WALL TILES

Floor and wall tiles: RAKO EXTRA large-format ceramic rectified tiles, 298 × 598 mm, 8 mm thick, choice of several shades or RAKO EXTRA large-format ceramic rectified tiles, 298 × 598 mm, 10 mm thick, white.

Mirrors: Mirrors in the bathrooms and some toilets are set into the tiles, according to the architectural designs.



STANDARDS

HOUSE ELEMENTS AND TECHNOLOGY

Radiator: KORADO KORALUX LINEAR white heated towel rail in the bathrooms. KORADO RADIK white panel radiators in the living rooms and garages.

Parapets: MDF board interior parapets.

Light switches, sockets: SCHNEIDER ASFORA, white.

Light fixtures: Preparation for the installation of light fixtures according to the project documentation, light fixtures are not included.

Exterior entrance lighting: Light fixture with energy-efficient LED light bulb.

Shading: Preparation (box and power supply) for the installation of blinds.

